



- 15.6"
- 23.8"
- 28"
- 31.5"
- 4K 3840 x 2160
- HDR
- 12G-SDI
- 6G-SDI
- 3G-SDI Level A/B
- Quad SDI 2SI
- Quad SDI 50D
- HDCP
- HDMI
- Speaker
- Ear Phone Jack
- 4-Pin XLR Power
- Fixed upright Stand
- TALLY function
- EIA Rack mount
- Multi view Mode
- Calibration

- 4K Ultra HD LCD Panel
- Multi format SDI (12G/6G/3G/HD-SDI) support
- Quad 3G-SDI compatible (2SI / SQD)
- Equipped with HDMI 2.0a input/output interface
- Multi-view mode (4 split screen display)
- Support marker/vector scope/histogram/HDR input
- User LUT support (.cube format)
- Various control methods (GPI/RS-422/IP)
- LCD protective acrylic panel included as standard (UH1561S only)
- EIA rack mountable (optional) (UH1561S only)



**Model No :** UH1561S [15.6"]  
 UH2381S [23.8"]  
 UH2801S [28"]  
 UH3151S [31.5"]

## Introduction

The UH Series is a 4K broadcast monitor compatible with 12G/6G/3G-SDI, featuring a LCD panel with 4K UHD resolution (3840×2160). It is equipped with 4 SDI input interfaces that comply with SMPTE standards, including 2 interfaces for 12G-SDI/6G-SDI, and Quad 3G-SDI (2SI/SQD) input for 4K display. Additionally, it features one HDMI 2.0a input interface that supports 4K@60 and is compliant with HDCP2.2. Furthermore, it also includes SDI and HDMI pass-through output interfaces, allowing for connections to recording devices through daisy-chaining and simultaneous display of multiple units. \*1\*2

With a variety of functions, the UH series also supports battery operation using a commercially available V-mount battery plate. These 4K professional LCD monitors are ideal for applications that require 4K preview of 12G-SDI signals, such as studios, video production environments, medical facilities, research and development, and embedded systems.

## Features

### 4K UHD LCD Panel

Features a 4K resolution (3840x2160) UHD LCD panel, offering 4 times the resolution compared to traditional Full HD LCD panels. It also supports HDR input and allows for the selection of various encoding methods from the OSD menu. \*4



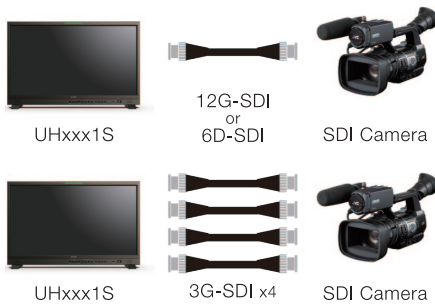
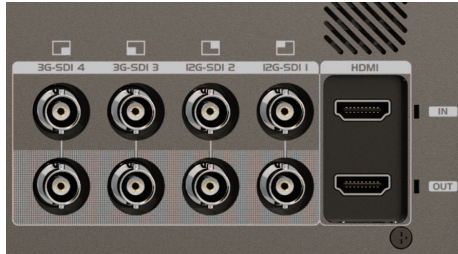
### Multi-View Mode

Multi-View Mode function allows you to display 4 different images in a 4-split screen on 1 screen. You can select input interface from 4 SDI inputs and 1 HDMI input and assign them to the divided sections of the screen for simultaneous display. \*3



## 12G / 6G / Quad 3G (2SI/SQD) / 3G / HD-SDI SDI, HDMI 2.0a Support

Equipped with 4 SDI input interfaces that comply with SMPTE standards, including 12G-SDI/6G-SDI inputs (2 interfaces) as well as quad 3G-SDI (2SI/SQD) input for 4K display. Additionally, it features 1 input interface for HDMI 2.0a, which supports 4K@60 and is compatible with HDCP2.2, necessary for playing copyrighted digital content like Blu-ray. It also includes pass-through output interfaces for both SDI and HDMI. This allows for daisy-chain connection to recording devices and enables simultaneous display of multiple units, making it an ideal preview monitor. <sup>112</sup>



### 2SI / SQD Support

## Calibration (White Balance Adjustment)

Equipped with a calibration function that allows for automatic adjustment of white balance using commercially available probes. It reduces the burden of daily maintenance. <sup>15</sup>



## Metal Chassis with Excellent Heat Dissipation Efficiency

Built with a sturdy and excellent heat dissipation metal chassis, ensuring long-lasting durability. It includes an internal temperature sensor that automatically adjusts the cooling fan speed, effectively maintaining optimal operating temperatures and enhancing heat dissipation. For quiet environments where noise reduction is needed, there is a manual option to temporarily stop the cooling fan. <sup>16</sup>

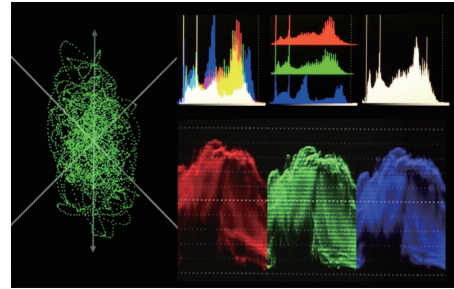
## 4 Pin XLR Power Input

Supports 4-pin XLR power input from included AC adapter. In addition, the AC adapter box, which is often difficult to store, can be stored in the AC adapter holder on the back of the main unit, simplifying the wiring around the power supply.



## Marker / Vector Scope / Histogram Function

Supports marker functions like "Aspect Marker" and "Safety Marker" for framing and composition. It also features "waveform monitor" displays for Y.Cb.Cr/RGB, providing visual representations of color and brightness levels. Additionally, it offers an "Audio Vector Scope" for monitoring 2-channel audio, all designed to assist video creators.



## Support User LUT (.cube format)

The UH series also allows users to import user logs and user LUT data (.cube) into the display through the USB port on the front panel. By applying user-prepared look setting files, it becomes possible to adjust the color gamut format settings, making it easier to coordinate between shooting, editing, and on-site operations. This feature enhances collaboration and seamless workflow between different stages of the production process.



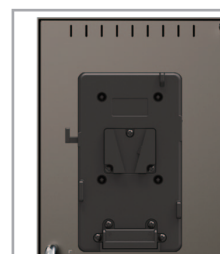
## Various Control Methods by LAN cables (GPI / RS-422 / IP)

Connectable to control device such as PC or etc via LAN cable for remote operation, including settings changes, input switching, and tally lighting. It offers three communication options (GPI, RS-422, and IP) through the LAN port, allowing flexible system design for different applications and existing equipment.

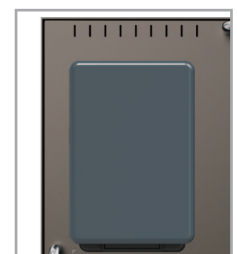


## Supports External Battery (V-mount screw holes on the back).

Equipped with a screw hole on the back of main unit for attaching a commercially available V-mount battery plate. By connecting the power cable from the battery plate to the 4-pin XLR connector, the display can be powered by a battery, enabling portable and battery-operated usage.



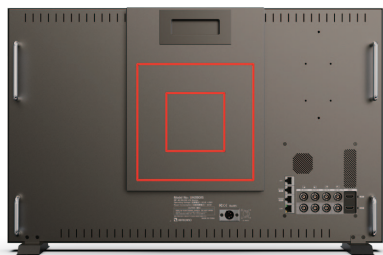
V-mount battery plate attached



V-mount battery attached

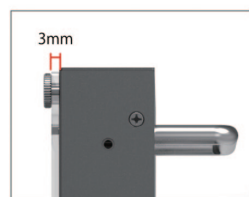
## VESA mounting holes (Except UH1561S)

Features VESA 100x100mm and 200x200mm screw holes on the back, allowing for wall mounting.



## Panel Protection Acrylic Panel (UH1561S only)

Comes with a standard 4H hardness (3mm thickness) acrylic panel, providing robust protection for the LCD. This acrylic panel effectively safeguards the LCD panel from potential damage during transportation and on-site handling.



## EIA Rack Mount (Option) (UH1561S only)

Dedicated EIA 19-inch rack brackets as an optional accessory. With a 6U size, it allows for rack mounting of the display, providing convenient integration into standard rack systems.



## Specifications

Model No.	UH1561S	UH2381S	UH2801S	UH3151S
Color	Black			
Size	15.6" Wide	23.8" Wide	28" Wide	31.5" Wide
Surface	Anti-glare			
Resolution	3840x2160			
Response time	30ms	14ms	15ms	14ms
Brightness	600cd/m2	230cd/m2	300cd/m2	350cd/m2
Contrast ratio	1700:1		1000:1	
Display Color	16 M colors		1 billion colors	
Color Gamut	DCI-P3 99%	DCI-P3 79%	DCI-P3 90%	DCI-P3 94%
View Angel	170°(H) / 170°(V)		178°(H) / 178°(V)	
Panel Protection	Acrylic 4H	-		
Input	12G-SDI x 2 / 3G-SDI x 2 / HDMI 2.0a x 1 (HDCP 2.2)			
Output	12G-SDI x 2 / 3G-SDI x 2 / HDMI 2.0a x 1 / 3.5mm Stereo headphone jack			
Other I/O	RJ-45 x 4 (GPI / LAN / RS-422 x 2) / USB Type A (LUT/FW update)			
Speaker	2W + 2W (L/R)			
V Mount Battery	Screw holes for V Mount Plate			
VESA	N/A	100 x 100mm / 200 x 200mm		
EIA Rack Mount	Support (Optional)	-		
Power		XLR 4 Pin DC12 to 24V (Recommend 15V)		
Max power consumption	35W	54W	60W	80W
Operation Temp	0 to 40°C			
Storage Temp	-20 to 60°C			
Size (not including stand)	389(W)×267(H)×37.2(D)mm	579(W)× 376.4(H)× 43(D)mm	662(W)× 414.3(H)× 46.5(D)mm	744(W)× 472(H)× 49.5(D)mm
Weight (not including stand)	Approx 3.7kg	Approx 8.9kg	Approx 10.1kg	Approx 13.8kg
Accessory	AC Adaptor / Power Cord / Stand / Panel Protection Acrylic *UH1560S only / Warranty			
Certification	FCC / CE / PSE / RoHS			
Warranty term	1 year from the date of purchase			

\*1 Theoretically, pass-through causes signal attenuation due to cable distance and the number of connections. When using a daisy chain, it is recommended to follow the maximum distance for each signal standard and use an equalizer.

\*2 Signal conversion between HDMI and SDI is not possible.

\*3 Various settings including color space and aspect ratio are applied to all 4 screens in common. Settings cannot be changed for each split screen.

\*4 Supports PQ and HLG encoding methods. Due to the limitations of the LCD panel specifications, it is not possible to fully express HDR.

\*5 We recommend using the Konica Minolta CA-310 probe. Also, automatic adjustment of white balance is only supported by REC709.

\*6 It is recommended that the cooling fan is always on. Please note that stopping the cooling fan may lead to damage depending on the ambient temperature.

\* Physical damage to the LCD panel during transportation or use is not covered by the warranty.

\* HDMI, HDMI logo, and High-Definition Multimedia Interface are trademarks or registered trademarks of HDMI Licensing LLC.

\* Other company names and product names mentioned are registered trademarks or trademarks of their respective companies.

\* Appearance and specifications are subject to change without notice.

\* Operation with all devices is not guaranteed. We recommend pre-testing with an evaluation machine.

\* All the images are illustrative purpose.

The latest information and the detailed product specifications are available at [www.ad-techno.com/en/](http://www.ad-techno.com/en/)

Copyright (c) ADTECHNO Inc. All rights reserved."ADTECHNO" and the ADTECHNO logo are registered trademarks of ADTECHNO Inc. All other brand names and trademarks or registered trademarks are the property of their respective owners. Pricing, specifications and availability subject to change without notice. Actual products, product images, and online product images may vary from images shown here. Not responsible for typographical errors.

